

IMPACT REPORT 2022

OUR MISSION


Ensuring snow leopard survival and conserving mountain landscapes by expanding environmental awareness and sharing innovative practices through community stewardship and partnerships.



75 Boyes Blvd., Sonoma, CA 95476, USA
Ph. 707.938.1700 • info@snowleopardconservancy.org
SnowLeopardConservancy.org

 [@SnowLeopardConservancy](https://www.facebook.com/SnowLeopardConservancy)

 [@SnowLeopardCons](https://twitter.com/SnowLeopardCons)

 [snowleopardconservancy](https://www.instagram.com/snowleopardconservancy)

SNOW LEOPARD CONSERVANCY

U.S. BASED STAFF & CONSULTANTS

Kathleen Ah San - *Accounts and Office Administrator*
Maria Azhunova - *Land of Snow Leopard Network Director*
Charleen Gavette - *Conservation & Education Program Manager*
Darla Hillard - *Land of Snow Leopard Network Facilitator*
Rodney Jackson, PhD - *Founder & President*
Shavaun Kidd - *Outreach Manager*
Ashleigh Lutz-Nelson - *Executive Director*
Brian Peniston - *Darwin Initiative Program Manager*
Joyce Robinson - *Office Assistant*

BOARD OF DIRECTORS

Raja Bhadury - *Vice President*
Caroline Gabel - *Trustee*
Mary Herrmann - *Trustee*
Rodney Jackson - *President*
Carolyn MacKenzie - *Secretary*
Eric Newsom - *Trustee*
Tshewang Wangchuk - *Trustee*
Robert Wilson - *Chief Financial Officer*

ASSOCIATES

Margaret Gee - *Australia Ambassador for Snow Leopard Conservancy*
Charlotte Hacker, PhD - *Research Biologist, Department of the Interior U.S.*
Jonathan Hanson, PhD - *Social Science Associate*
Jan Janečka, PhD - *Director of SLC's Genetics Research Program, Duquesne University*

ADVISORS

Christine Breitenmoser-Würsten, PhD - *IUCN Cat Specialist Group*
Renee Bumpus - *Conservation Manager, Houston Zoo*
Don Hunter, PhD - *Founder, Rocky Mountain Cat Conservancy*
Kristin Nowell - *Director, Cat Action Treasury*
Barb Palmer - *Husbandry Advisor*
Camille Richard - *Rangeland Ecologist*
George Schaller, PhD - *Wildlife Biologist & Conservationist*
Mike Weddle - *Former Science Instructor*

U.S. BASED PARTNERS

International Veterinary Outreach
OneNature Institute
RESOLVE
Rocky Mountain Cat Conservancy
San Francisco Zoo and Gardens
Wildlife Conservation Network
Worldwide Indigenous Science Network

RANGE COUNTRY PARTNER ORGANIZATIONS

ALTAI & BURYAT REPUBLICS OF RUSSIA
Baikal Buryat Center for Indigenous Cultures
Foundation for Sustainable Development of Altai
BHUTAN
Bhutan Foundation
INDIA
Snow Leopard Conservancy India Trust
KYRGYZSTAN
Rural Development Fund
Taalim-Forum Public Foundation
MONGOLIA
Association for Protection of Altai Cultural Heritage
Irbis Mongolia
Mongolia Academy of Sciences
Nomadic Nature Conservation
Wildlife Initiative
World Wildlife Fund Mongolia
NEPAL
Department of National Parks and Wildlife Conservation
National Trust for Nature Conservation, Annapurna Conservation Area Project
Mountain Spirit
Project Ukali
Snow Leopard Journey
Teka Samuha Nepal
World Wildlife Fund Nepal
PAKISTAN
Baltistan Wildlife Conservation & Development Organization
Project Snow Leopard
RANGEWIDE
Global Snow Leopard and Ecosystem Protection Program Secretariat
International Snow Leopard Trust
Snow Leopard Network
TAJIKISTAN
Public Organization “Kuhhoi Pomir” (Pamir Mountains)

A Lasting Legacy for
Snow Leopards

GUARDIANS OF THE ASIAN HIGH MOUNTAIN ECOSYSTEM

Dear Friends,

We are thrilled to share the Conservancy’s 2022 highlights with you! We are truly thankful for your support toward growing a lasting impact for snow leopards and mountain communities.

2022 was a momentous year for SLC: Ashleigh became SLC’s Executive Director and Dr. Rodney Jackson assumed the presidency of the Board of Directors. Special thanks to Caroline Gabel, SLC’s Board Chair for the past 10 years! In December, SLC’s founders Dr. Rodney Jackson and Darla Hillard stepped into advisory roles supporting next-generation leaders after four decades of pioneering snow leopard research and conservation.

SLC’s community-based conservation strategy has long been cutting edge, and now after 20 years it’s a mainstay for global snow leopard conservation. Working with local communities is paramount to human-wildlife coexistence and long term survival of so many species.

The Land of Snow Leopard Network (LOSL) initiative, launched in 2013, facilitates efforts by Indigenous Cultural Practitioners, Spiritual Advisors, and conservation practitioners to restore traditional ecological knowledge and the interconnected web of life. This program has inspired thousands of people in five regions of Central Asia to become Guardians of this Sacred Species.

After two pandemic years, we traveled to work closely with our partners in Nepal, Kyrgyzstan, and Mongolia. Ashleigh participated in the 7th Global Snow Leopard Ecosystem Protection Program meetings in Bishkek, expanding the framework for continued collaboration on important aspects of snow leopard conservation.

We hope you’ll enjoy these inspiring stories of how local leaders are creating lasting coexistence between snow leopards and mountain communities, catalyzed by SLC with your incredible support.

With heartfelt gratitude,



Rodney Jackson, PhD
Founder & President



Ashleigh Lutz-Nelson
Executive Director



We would like to acknowledge the extraordinary program support provided by:



DARWIN INITIATIVE



PAWANKA FUND



SHARED EARTH FOUNDATION



IUCN



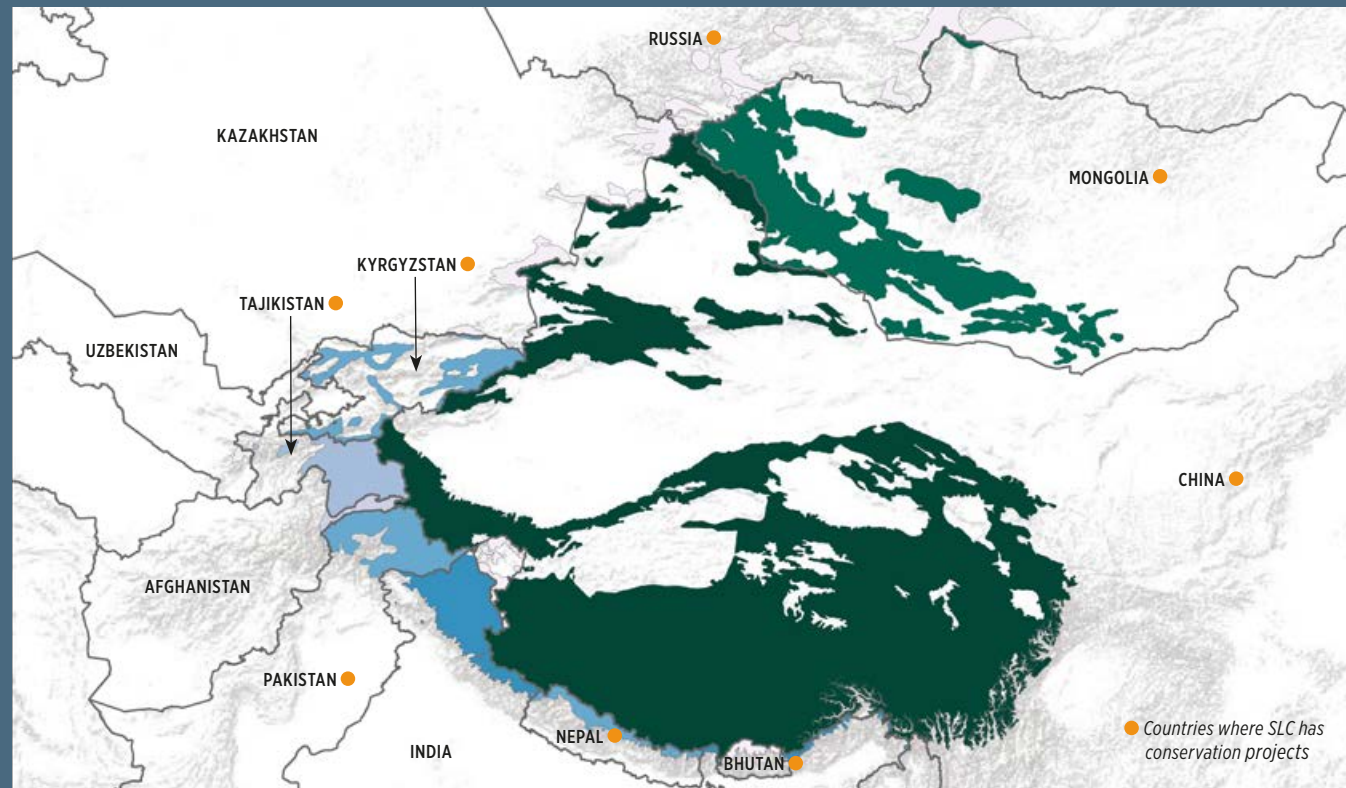
WILDLIFE CONSERVATION NETWORK

LANI ABBOTT

DR. FISK JOHNSON

2022 AT A GLANCE

SNOW LEOPARD RANGE



12

NUMBER OF RANGE COUNTRIES WHERE SNOW LEOPARDS ARE PRESENT

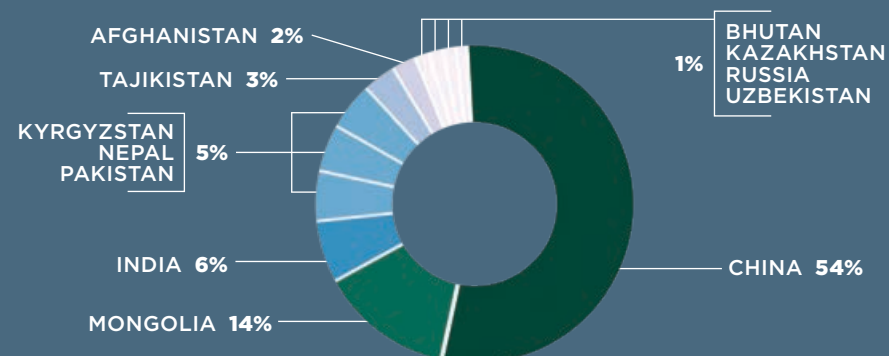
8

NUMBER OF COUNTRIES WHERE SLC HAS SNOW LEOPARD CONSERVATION PROJECTS

4,000-7,000

NUMBER OF SNOW LEOPARDS ALIVE TODAY (RED-LIST VULNERABLE)

ESTIMATED PERCENTAGE OF SNOW LEOPARD POPULATION BY COUNTRY



{ 2 }

TOP THREATS TO SNOW LEOPARDS



CLIMATE CHANGE



LACK OF AWARENESS



PREY DEPLETION



HABITAT DEGRADATION



RETRIBUTIVE KILLING FROM CONFLICT OVER LIVESTOCK



ZOONOTIC DISEASES

SLC CONSERVATION PROJECTS

5,000

HERDING COMMUNITY MEMBERS ACTIVELY ENGAGED IN LIVESTOCK AND SNOW LEOPARD PROTECTIVE MEASURES

25

MEN AND WOMEN WERE EMPLOYED IN LOCAL COMMUNITIES IN 6 SNOW LEOPARD RANGE COUNTRIES

102

MORE FOXLIGHTS DISTRIBUTED

SLC EDUCATION PROJECTS

30 SCHOOLS ENGAGED WITH 4,000 STUDENTS AND 120 TEACHERS

3,400

SNOW LEOPARD DAY FESTIVAL PARTICIPANTS

16,000

ADDITIONAL LOCAL COMMUNITY MEMBERS REACHED WITH EDUCATIONAL OPPORTUNITIES

370

COMMUNITY MEMBERS ENGAGED IN DIRECT TRAINING

SLC IS LED BY OUR 6 CORE VALUES

Passion
Creativity
Empowerment
Collaboration
Integrity
Reverence

We are driven by the urgency of protecting wildlife and wild places
Embracing innovation, imagination, and insightful observations
Empowering staff, partners, and communities to sustain effective conservation
Recognizing the importance of diverse, inclusive, and equal partnerships
Maintaining honesty, trust, and respect as the basis of our work
Recognizing snow leopards as ecological ambassadors and spiritual totems

{ 3 }



© Tashi R. Ghale

Living With Snow Leopards

PROVIDING COMMUNITIES TOOLS TO COEXIST WITH CARNIVORES

NEW LIVELIHOODS SAVE SNOW LEOPARDS

The Darwin Initiative Project (Sustaining Snow Leopard Conservation through Strengthened Local Institutions and Enterprises), led by SLC and Nepali partner organization Mountain Spirit, came to completion after four years. The program trained almost 250 governmental staff in conservation safeguarding, streamlined livestock depredation compensation programs, and established a unique “Snow Leopard Trail” ecotourism experience. Additionally, the project brought assistance to herders for livestock guarding and the novel cultivation of jimbu (Himalayan chives), while at the same time supporting local wildlife surveys and protective measures. Our work under the Darwin Initiative, a United Kingdom governmental grant, created a strong foundation which SLC will build upon in the future to forge resilient snow leopard-friendly communities.

IMPROVING HUMAN AND ANIMAL HEALTH

In the spring, SLC Executive Director Ashleigh Lutz-Nelson, SLC Darwin Initiative Program Manager Shailendra Thakali, PhD, and International Veterinary Outreach Founder & CEO Eric Eisenman, DVM, visited the Annapurna region of Nepal to launch the One Health Project. After three days of trekking to one of the most remote, roadless areas of Manang, two workshops with the herding communities were hosted: one in each of the Nar and Phu villages in collaboration with local para-veterinarians, rural municipality officials, and Annapurna Conservation Area Project wildlife officials. Eighty participants, both men and women, learned methods of improving livestock health and husbandry, protecting livestock and wildlife from conflict, and reducing the risk of disease transmission between people, domestic animals, and wildlife.

The overarching goals of the One Health Project are to improve human-animal health, strengthen local veterinary training and resources in the high mountains, and build lasting human-snow leopard coexistence in Nepal.

HERDERS AS FRONTLINE SNOW LEOPARD GUARDIANS

Our partners in Mongolia, Pakistan, Nepal, Tajikistan, and Kyrgyzstan are engaging their local herding communities in the Lights for Life coexistence program. Through workshops, face-to-face visits, and community meetings, they are providing equipment such as Foxlights,[®] which help to deter night-time predator attacks on livestock, and solar lights to help the herders guard the animals. Valuing the input of those living with snow leopards, they are brainstorming with the communities to identify actions that may minimize depredation. Financial compensation through livestock insurance can ease the economic burden following depredation loss and dissuade the urge for retaliatory killing of snow leopards. However, the claims process can be challenging, so partners are working with agencies to simplify requests for compensation and educate the herders how best to complete the forms.

In the spring, Dr. Rodney Jackson met with partner Tshiring Lhamu Lama in Dolpo, returning to the location of his original snow leopard research. Tshiring and Rodney discussed wildlife-livestock conflict issues and explored processes and methods to minimize contact between predators and domestic animals.

With every herder interaction our partners stress the importance of the ecosystem, emphasizing that all elements are interconnected. Removing one element, especially an apex predator such as a snow leopard, has detrimental repercussions that will be felt down the web of life, even by herders. Knowledge of the snow leopard’s place in the ecosystem, and how its removal could negatively affect available pastureland for domestic livestock, aids the herder in making choices beneficial to both the community and to the environment.

With instrumental support from the Woodtiger Fund, the Lights for Life coexistence program has grown substantially over the last three years, reaching more herding communities and saving the lives of snow leopards. ●



Opposite page: A mother snow leopard and her two subadult cubs in the mountains of Nepal. Top: Dr. Rodney Jackson and mentee Tshiring Lhamu Lama, Dolpo, Nepal. Center: One Health workshops with Phu community, Nepal. Bottom: Snow leopard image from a remote sensing camera trap, Altai Mountains, Mongolia.

Land of Snow Leopard

EXTRAORDINARY SYNERGY IN SPIRITUAL, ECOLOGICAL, AND CULTURAL CONSERVATION



Left to right: Schoolchildren in Ulaanbaatar, Mongolia learn the importance of the web of life in the Nomadic Nature Trunk Program with Tungalagtuya Khuukhenduu. Zhaparkul Raimbekov, Founder of the Elders and Youth for Conservation of the Snow Leopard program in Kyrgyzstan. Nomad Kids' Ecocamp participants celebrate biocultural diversity and connecting with nature.

The Land of Snow Leopard (LOSL) Network is a groundbreaking collaboration between western science and Traditional Ecological Knowledge. LOSL's approach is uniquely rooted in the Indigenous understanding of the sacredness, cultural, and environmental significance of snow leopards across Central Asia. Indigenous Peoples in this region relate to the snow leopard as the protector of sacred mountains, a unifying force, and a source of spiritual power and wisdom.

ELDERS AND YOUTH FOR CONSERVATION OF THE SNOW LEOPARD

The International Union for Conservation of Nature (IUCN) Save Our Species grant supported the "Elders and Youth for Conservation of the Snow Leopard" program in Kyrgyzstan, conceived of and realized by Zhaparkul Raimbekov, a founding member of LOSL and a Giver of Blessings throughout his community. This project strengthened the mutual understanding of the local population to

spiritual practices for the conservation of sacred animals and sacred places with the involvement of youth. Zhaparkul traveled extensively to sow the seeds of traditional Kyrgyz wisdom of bringing "harmony and balance to the natural world" and "the deep connection people have had for centuries with the snow leopard." He imparted knowledge of the sacredness of animals like the snow leopard and the importance of preserving the "protector of the sacred mountains." He spoke of "the need for people to learn from the wisdom of the snow leopard," its vital role in nurturing and teaching humanity, and its significance in the current Earth-Mother ecosystem.

EXPANSION OF THE NOMADIC NATURE TRUNK PROGRAM

Over the past year, the Mongolian Nomadic Nature Trunks Program expanded its reach into the LOSL Network. Network members in both Kyrgyzstan and Tajikistan began compiling the trunk materials and translating the lessons from Mongolian. Sessions of

"Training the Trainers" were held to introduce the concepts to teachers who will further train their colleagues. The program consists of both scientific and traditional ecological knowledge of high mountain ecosystems, including lessons on biodiversity, protection of the environment, and the peaceful coexistence of humans and nature.

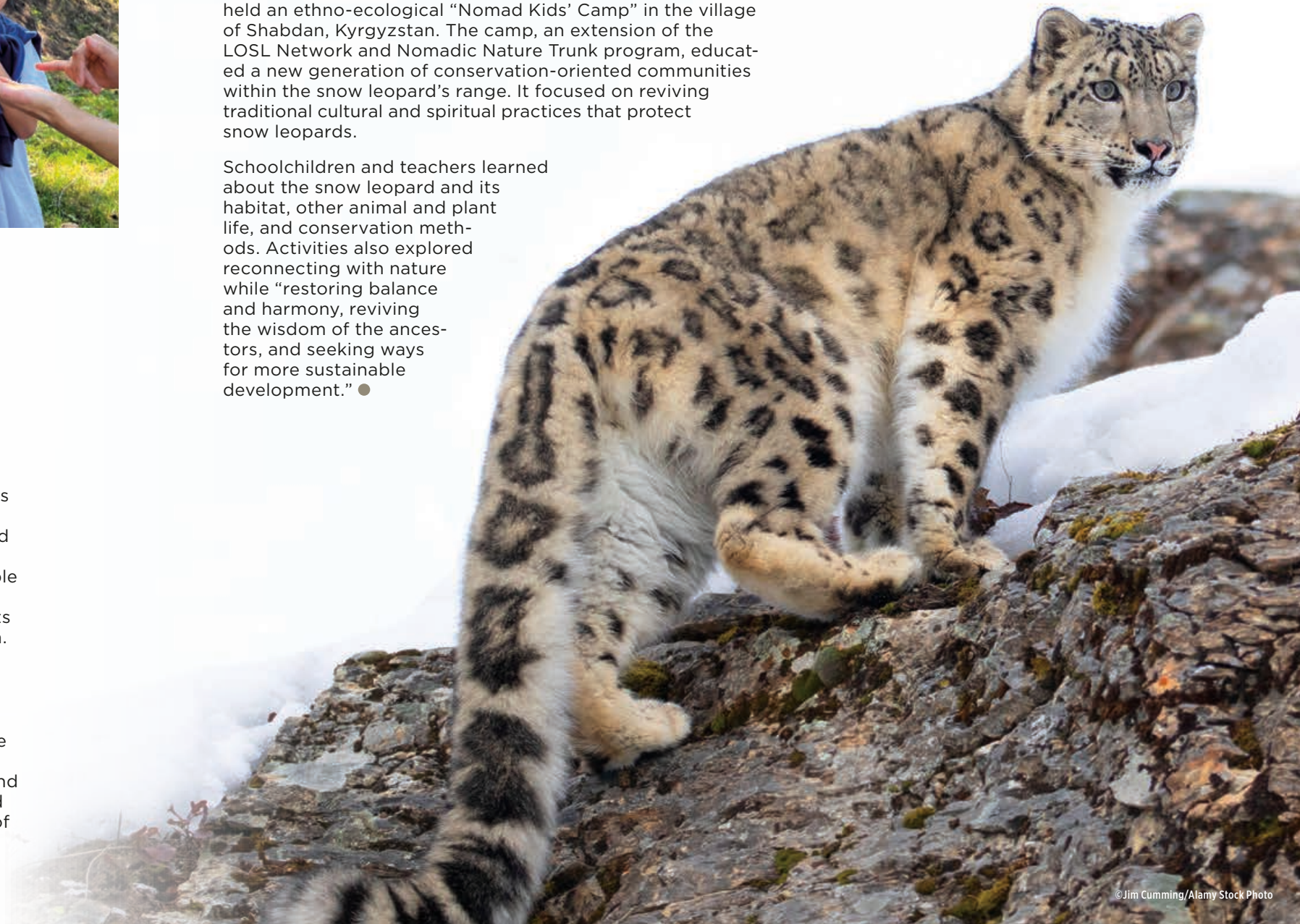
A history teacher in the Issyk-Kul region of Kyrgyzstan shares her thoughts: "Thank you Rural Development Fund, Taalim-Forum, and Snow Leopard Conservancy for this work. The youth are our future and love nature living by the lake. Through our work we try to bring lots of knowledge, and through this project we are able to provide traditional knowledge." All the school teachers and directors that participated in the training said they were so happy to meet and work with other teachers, as it was the first opportunity to do so.

NOMAD KIDS' CAMP

In August, Taalim-Forum and the Rural Development Fund held an ethno-ecological "Nomad Kids' Camp" in the village of Shabdan, Kyrgyzstan. The camp, an extension of the LOSL Network and Nomadic Nature Trunk program, educated a new generation of conservation-oriented communities within the snow leopard's range. It focused on reviving traditional cultural and spiritual practices that protect snow leopards.

Schoolchildren and teachers learned about the snow leopard and its habitat, other animal and plant life, and conservation methods. Activities also explored reconnecting with nature while "restoring balance and harmony, reviving the wisdom of the ancestors, and seeking ways for more sustainable development." ●

"I am asking you to accept these words from my elder. This is an appeal for harmonization, an appeal to harmonize our inner worlds. And with that to connect the outer world in oneness and universal harmony"
—Maria Azhunova,
LOSL Director



Inspiring the Next Generation

SNOW LEOPARDS BENEFIT FROM CONSERVATION EDUCATION



Nepali Snow Leopard Scout participants learn field biology techniques, such as using binoculars to search for signs of wildlife.

Researchers have found when children develop empathy for animals they will act on behalf of animals in the future. Brianna Voight, in “Making connections: empathy for animals and sustainable behavior,” writes that empathy is an emotional state where an individual “perceives, understands, and cares about the experiences or perspectives of another person or animal.” She found clear connections that empathy leads to behavior change for environmental stewardship and that the transition from having empathy to acting on that sensitivity is most effective when learned in childhood.

IN THE CLASSROOM

Keeping with this concept, Snow Leopard Conservancy is commit-

ted to providing environmental education to the children living in snow leopard habitat, and to those living in areas where conservation decisions are made. This year, SLC supported in-school programs in several locations, reaching over 4,000 students. In Mongolia, school children in the rural west and children in the capital, Ulaanbaatar, received the acclaimed 25-lesson Nomadic Nature Trunks training by Tungalagtuya Khuukhenduu of Nomadic Nature Conservation. Almost 1,000 Pakistani children from 12 schools received concentrated conservation instruction by Baltistan Wildlife Conservation and Development Organization (BWEDO). In eastern and central Nepal, Anil Adhikari and partners of Teku Samuha Nepal incorporated a conservation curriculum into

Grades 7 and 8 with the backing of government agencies.

Interestingly, following the coursework in Nepal, an overwhelming percentage of the students felt snow leopards should be conserved (92%), shouldn’t be killed (72%), and helped environmental balance (66%). Yet, only 49% answered that snow leopards were not the enemy of humans, showing more work needs to be done to fully address concerns of those living with snow leopards.

IN THE FIELD

Outside the classroom, the Snow Leopard Scouts program continued in Nepal with two field excursions that taught participants about the fragile high mountain ecosystem, the benefits of camera

traps, the importance of the web of life, and conservation expression through art. They also had discussions with former Scouts.

As in years past, festive celebrations were held to commemorate International Snow Leopard Day in Pakistan, Nepal, and Mongolia. The celebrations are an opportunity for the full cross section of a community to pay tribute to snow leopards and the environment, to provide and receive conservation information, and to perform and view skits, artwork, and essays. It truly is a time for acknowledging the natural world and recognizing the roles people play in it, allowing them to explore ways to lessen the strain on both humans and wildlife.

Snow Leopard Conservancy would like to note the General Manager of Pakistan’s BWEDO has moved on to leading a new organization. We thank Ghulam Mohammad for all his thoughtful and productive contributions to snow leopards and communities in Gilgit-Baltistan over the years. We give a sincere welcome to Dr. Muhammad Zaman as the new head of BWEDO. Dr. Zaman will carry on the important work in conservation education, herder engagement, and research. ●

*The 7th edition of **Snow Leopard Magazine**, the mainstay of snow leopard news within Nepal, was published by Anil Adhikari. This popular magazine spotlights range-wide research, interviews of noted individuals and government officials, news items, poetry and essays, and short conservation stories.*

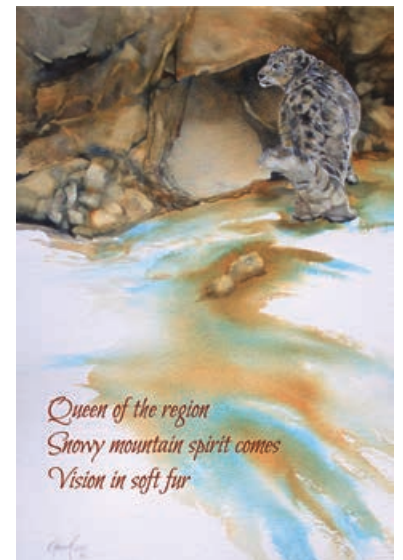
2022 ARTWORK & POETRY CONTEST WINNERS



Old Blue Eyes by Dave Hills



On the Watch by Pat Schwab



Journey of the Snow Leopard by Kitty Harvill

POETRY

ADULT

Kathi Lehman
Sandra McEwen
Sarah Mills
Terry Pfister
Grisselle Chock
Emma Lee

YOUTH

Kuhu Kacher

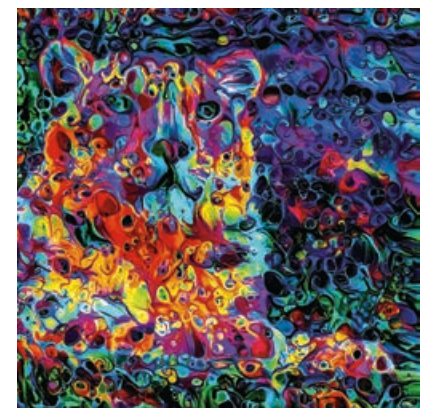
ARTWORK

ADULT

Pat Schwab
Dave Hills
Ekaterina Drozhkina
Karla Mann
Sarah Stribbling
Samantha Greenhill
Anju Panwar Rajesh
Debbie K. Morris
Susanne Fumelli
Kateryna Bielikova
Jody Call
Birgit Bühlé
Joan Barbosa
Debi Lockhurst
Kitty Harvill
Grisselle Chock

YOUTH

Zaina Alam Piya
Devlini Denethmie
Kudathanthirige
Susan
Kuhu Kacher
Margarita Khrustaleva



Ice King by Joan Barbosa

With Gratitude to Our Donors

*Every effort has been made to ensure the accuracy of our donor acknowledgments.
If your name has been omitted or misspelled, please contact us at info@snowleopardconservancy.org.*

SNOW LEOPARD LUMINARIES \$25,000+

Anonymous (1)
Lani Abbott
Dr. Fisk Johnson
Pawanka Fund
Shared Earth Foundation
Wildlife Conservation Network

GUARDIANS OF THE GHOST CAT \$10,000-\$24,999

Mary Bookwalter & Jeffrey Stant
Hiroko Crispin
The Capital Group
Companies Charitable Foundation
CGMK Foundation
Darwin Initiative
Carole Garcia
IUCN Save Our Species
Susan Janin
The Lehr Family
The Woodtiger Fund

WARRIORS FOR WILDLIFE \$5,000-\$9,999

Julie & Tom Atwood
Eleanor Bookwalter
Carol Lee Price Charitable Fund
Richard & Darcy Kopcho
Eric & Kathleen Newsom
San Francisco Zoological Society
Sedgwick County Zoo
Karie & David Thomson
Vibrant Rhythm
Charitable Fund
Whatcom Community Foundation
Wild Cat Education & Conservation Fund

PROTECTORS OF PEACE \$1,000-\$4,999

Penny Andrews
Angela & Dan Arwady
Teresa Audesirk
Sandy Ball
Henry & Suzanne Bass
Raja & Katrine Bhadury
Laura Boland
The Brodsky Charitable

Foundation Trust
Judith Brown & Michael Meyers
Ann Bujas
Jo Cangelosi
Bill Carmean
Beverly Chan
Chevron Matching Employee Fund
Katie Clevenger
Ashley Day
Doug & Pat Donaldson
Barbara & Samuel Dyer
Lawrence Fahn
Charlotte Farber
Waltrud Finch
Gerri Finkelstein-Lurya & Stephen Lurya
Robert Fulton
Google Gift Matching Program
Lucy Hairston
Maud Hallin
Meryt & Peter Harding
William & Sally Hines
Donna Howe & Juan Loaiza
HP Matching Grants
Kennon Hudson
Victoria Hunter
Dr. Rodney Jackson
Kristine Karnos & Jay Mitchell
Donald & Diane Kendall
Lynn Kilbourne
Michael Kross & Vivien Lin
Lori & Bruce Laitman-Rosenblum
Todd Ludeke
Ursula Marti
Prudence Noon
Jim & Tammy Patton
Pat Price
Project Survival
Qualcomm Inc.
Nancy Robertson & Mark Cookingham
Sacramento Zoological Society
David Sagara
Sally Saunders
Barry Sharaf
Stefanos Sidiropoulos & Lena Tsakmaki
Linda Tabor-Beck
George Taylor II
Jan Warz
Molly O' Brien Watkins & David Watkins
Charles & Judy Wheatley
Robert Wilson
Sally Young

FORCES FOR NATURE \$500-\$999

AmazonSmile Foundation
Tom Anderson & Tamia Marg
Raminder & Anupa Bajwa
Frank & Catherine Bator
Thomas Bennett
Cadence Match Gift Program
Laura Chenel
Judy Domaszek
Sandra Farkas
Donna Genett
Dr. Kathy Gervais
Luigi Ghidotti
Keith Goldstein & Donna Warrington
John & Phyllis Gurney
George & Jill Helmer
Crystal & John Babos
Beverly Baker
Tori & Chris Baker
Betsy Ballenger & Christopher Beale
Nanette Blair
Randi Boeje
Robin Boselli
Patricia Joanides
Chris Jones & Sharon Ponsford
Susan Leibik
Larry Lewis
LinkedIn Corporation
Matching Gifts
Hal Litoff
Edwina Lu
Dixie Luebecke
Bonnie MacKinnon
Annette Claassen
Anthony Cruciani
Heidi Danieli
David Davidov
Lisabeth Davis
Somshaker Desai
Sandeep Dey
Gregory Doll
Thomas & Ann Duvall
Eric & Mari Eisenman
Brian Elliott
Leslie Ellison
Ronald Felzer
Felisfire
Daniel Fisher-Owens
David Gallardo
Charleen Gavette
Charles Gay & Pamela Ross
Barbara George & Jerry White
Francis Glennon

UNCIA ALTRUISTS \$100 \$499

Anonymous (1)
Sam Adams
Kathleen & Michael Ah San
Scott & Donna Albini
J Yasmin Alexander
Suzan Alexander
Betsy Howell
Don Hunter
Anne Husmann Belcher & Bill Belcher
Rupika Jain
Bill James
Michael Johnson
Cheryl Keene
Sarah Knapp
John Kohler
Robert Kornet
Daud Kureshi
Laura Kyzar
David Leland & Ann Howald
Sandra Lelich
David Lenette
Marguerite Li
John Lloyd
Darrell & Donna Louie
Ashleigh Lutz-Nelson & Ryan Nelson
Carolyn MacKenzie
Kendrick & Carol McCarthy
Elizabeth McKerrow
Logan John Sun Meek
Wendy & Doug Money
Monterey Zoological Society
Jacquelyn Morris
Sharon & Jeffrey Morris
Michael Murphy
Jane Myers & David Hunter
Ella O'Sullivan
Joyce Ostertag
Sheryl Owyang
Julie Palais
Ronald Paradies
Katherine Pattison
PayPal Giving Fund
Brian Peniston
William Peniston
Jefferson Perry
Donovan Peters
Carey Peterson
Karen Piper
Steven & Teri Read

Michael & Katherine Robbins
Amy Rodney
Mary Grindelaud
Jacqueline Rouff
Martina Ruf
Deborah & Russell Ryder
Natalie & Justin Sachs
Samantha Salazar
Maya Savchovska
Adam Schilling
Acmena Schmid
Ellen Schwenne
Nicole Shaw
R. Scott & Barbara Sheaffer
Fraser Small
Abhijeet Sohni
Liz Spencer
Rhonda Stallings & Lee Rich
Ian Staten
David Hubbert
Christine Stewart
Amy Tao
Lawrence Thompson
Linda Thompson
Paul Tierney
Dana Timar
Darrell & Kathleen Tornow
Benjamin & Frances Trefny & Family
Catherine Trombley
Danica Truchlikova
Paul & Kelli Ulan
Sharon Vereas
Charles Villarrubia
Tshewang Wangchuk
Duncan Ward
Christen Wemmer
Mark Whitney
Cheryl Wilkinson
Janet Williams
Jonathan Willing
Lisa Winkler
Steven Wolfe
Donald Wong
Barbara Wright & Katie Sanborn
Terry Wrobel

FRIENDS OF FELINES UP TO \$99

Anonymous (2)
Susan Alancraig
Belinda Alwine
Tina Anakhasyan
Jaclyn Ann
Laura Anne
Gianessa Araya
Sammi Araya
Nicole Aucoin
Aina Avre
Halla Ayala
Cynthia Baart

Todd Bailey
Kim & Jim Lloyd
Irene Ballenger
Bank of America
Matching Gift Program
Georges Barth
Lou Ann Bassan
Kayley Bateman
Linda Belben
Alexandra Bengals
Amanda Bethke
Corie Biggs
Amelia Black
BlackRock Matching Grant Program
Mark Blutstein
Boeing Matching Grant Program
Gary Bortner
Jeanmarie Bostley
Mary Boswell
Devon Breton-Pakozdi
Heather Brockley
Ivy Brower
Bobbi Jo Broxson
Jared Bublinec
Allison Bulow
Deborah Cady
Lydia Cady
Laurel Carr
Rose Ann Cattolico
Mohamed Chachia
Anna Chaney
Alison Chromey
Darlena Ciraulo
Amy Cole
Charity Coleman
Amanda Collins
Karen Conger
Mike Conlan
Joe Cooper
Joanne Corsano
Elizabeth Cosgrove & Cameron Smith
Costco Wholesale Corporation
Vinnie & Stephanie Cotignola
Karen Cravotto
Debra Crowe-Vitale
Kelly Daire
Barbara Daniel
Odile Deguericy
Lucinda Deus
Brian Dickens
Disney Employee Matching Gifts Fund
Emma Doran
Duncan
Mariko Eastman
Fran Ecklind
Pixie Ellis
Sille Espeland
Valerie Face
Bonnie Farmer
Cassandra Fazio & Pamela Borne
Erin Ferguson
Denna Fontes
Scott Fraser
Lainey Gaines
Jess Garland
Victoria Gaunt
Janine Geenen
Corrina Geerts
Casey Gee Spencer

Genentech Matching Gift Program
William Gillette
GoodSearch/GoodShop
Tari Gordon
Jessica Granish
Laura Greenfield
Jonathan Grief
Nicola Grieve
Pamela Grismere
Remy Guitierrez
Kari-anne Gulbrandsen
Daniel Gutierrez
Margaret & Steven Gutteridge
Cathy Haddle-Jaggers
Colleen Hagerty
Ines & Dominik Hamann
Nicholas & Caroline Han
Bradley Hange
Autumn Harrison
Paul Harrison
Naheed Hashmi
Valerie Haskins-Moore
Robert Heckman
Carl Henrickson
Mariana Hernandez
Hollie Hester
Jimmi Hill
Misako Hill
Thomas Hiura
Tulasi Hosain
David Hubbert
Ian Huerta
Jolyon Hughes
Sasha Hughes
Richard Hunckler
Justin Hunter
Janine Irwin
Georgina Isola
JB JB
Blaine & Jennifer John
Richard Johnson
Tim & Marissa Johnson
Elizabeth Jonca
Thomas & Pamela Jozwiak
Blair Kangley
Kalvin Kao & Madeline Ruhlow
Outi Kaplas
Varpu Kaplas
Arinder Kaur
Michelle Keane
Ursula Kennedy
Debbie Kershaw
Rubina Khilnani
Reija-Tuulia Kokko
Lori Komejan
Otto Kopra
Hazel & Hjalmer Koski
Rene Kunz
Emily Laipple
Elizabeth Langhorst
Borja Lapetra Olano
Louise Larsson
Tia Lawson
Tony Le
Giada Lehani
Kathi Lehman
Chris Leigh
Julie Leigh
Sam Leigh
Emma Leuw
Peter & Olivia Leveque
Marc Light

Arden Lindner
Kim & Jim Lloyd
Gina Lombardi
Darla & Brian Lovrin
Elizabeth Lowenstein
Andy Loynd
James & Mary Ann Macie
Becky MacPherson
Kristof Mariahazy
Fildelma Martin
Monique Martin
Whitney Martin-Steinfeld
Kayla Mathiowetz
Randy & Alicia Mazzuca
Ann Marie McBride
Heather McCann
Rebecca McColgin
Riley McGaw
Steven McGettigan
Member One FCU
Anne-Lisa Michaud
Vita Mickane
James Mills
Kristin Moe
Joseph Moreira
Katharine Morris
Robert & Marilyn Moyes
Jessie Myszka
John Nagy
Emily Navarre
Kate Neal
Autumn Nelson
Scott & Stephanie Nelson
Mindy Newquist
Talley Nichols
Tracy Nielsen
Mary Nolan
Mark Oberholz
Erin & Tim Oldread
Cynthia Olson
Tanya Palmer
Tanja-Liisa Pankkonen
Paramount
Tom C Parrett
Lynn Pecaro
Jerrie Pederson
Douglas Petties
RJ Planck
Jennifer Pollock
Travis Potter
Chloe Poulter
Dina Pyron
Julianne Pyron
Carolyn Raasch
Meredith Randall
Alexandra & Gordon Readey
Bonnie Reid and Richard Roche
Jessica Rice
David Richards
Sara Rider
Sarah Riemer
Peter & Sara Riger
Suzette Rochat
Peter Rudolph
Diana Russell
Alexandra & Gordon Readey
George Schaller
Martin Schlaegel
Jenna Schmidt
Cristina Schryver
Adam Scott
Catherine Seele

Zachary Seidner & Sibel Ciddi
Lucas Seimas-Hart
Ella Shalvi Antalis
Stephen Shaw & Anne Barker
Katelyn Sheader
Rebekah Sheppard
Berna-Denise & Reynold Silver
Nic Skipwith
Kristian Skjoldan
Kelly Slattery
Murray Smart
Serenedy Smith
Blinky Snowflake Snep
Shiro Snep
David Soller Jr.
Nancy Sorensen
Peter Souvatzis
Megan & Diana St. Germaine
John Stanis
Jack Stanley
Heather Steel
Naomi Steele
Ulrike Stein
Patricia Stengle
Marguerite Swift
Sophie Taylor
Matthew Thomas
Meghan Thompson
Robin Thorne
Irina Tolkova
Ryan Tollgaard
Kaia Tulesdal
Björn Persson
Tamara Turner
Cary Van Haaren
Judith Van Slooten
Marty Varon
VMware Foundation
Sylvia Waid
Sarah Wandler
Marielle Westerman
Melissa Whitworth
Jereld Wing & Carol Moen Wing
Linda M Wise
Wishly
Laura Wittish
William Woodthorpe
Cristina Wright
Petra Y C U
John & Cathy Yee
Masashi Yoshikawa
Bjarn Zangmeister
Jiajun Zhu
Billy Zias
Monica Zias
Andrea Zuckerman

IN-KIND DONATIONS & SUPPORT

Kayley Bateman - *Program & office support*
Monica DuCloud - *Graphic design expertise*
ESRI - *Geographic information mapping software*
Charlotte Farber - *Event sponsor*
Ben Hunter - *Videography*
Shavaun Kidd - *Professional writing & special events*
Hunter Listwin - *Program & strategic support*
Microsoft - *Software*
Dr. Adrian Mutlow - *Program support*
Katherine Oppenheim AKA "Kaysea Ray" - *Artwork for sale*
Jeff Poehlmann - *Office support*
Joyce Robinson - *Office support*
Sheppard, Mullin, Richter & Hampton LLP - *Pro bono support*
John Sichi - *Tech support & web design*
Rod Spence - *Special events & fundraising sales fulfillment*
SpiritHoods - *Snow Leopard & Wolf hoods for Nature Trunk Program*
John Stanis - *Event planning*
Ian Whalan - *Foxlights International Pty Ltd*
Wildlife Conservation Network - *Technical & strategic support*
Joe Wilson - *Computer & IT support*
Robert Wilson - *Financial & legal expertise*

VOLUNTEERS

In 2022, 13 volunteers, staff and Board members donated their time and talents, valued at more than \$25,000.

PHOTOGRAPHERS & ARTISTS who generously allow us to use their stunning snow leopard images

Oriol Alamany
Fiona Anderson
Angela Ingrassia Arwady
Kateryna Bielikova
Peter Bollinger
Jody Call
Ekaterina Drozhkina
Katey Duffey
Suzi Eszterhas
Patricia Vega Garrido
Tashi R. Ghale
Rafael Kettsyan
Elena Kolotusha
Susan Leibik
Debbie K. Morris
Björn Persson
Vikram Singh
Marcia Sivek
Sarah Stribbling
Steve Tracy
Steve Winter
Jak Wonderly
Feng Yang



Tribute Gifts

BIRTHDAY GIFTS

For Adrian:
Serenedy Smith
Sarah Wandler

For Alexandra:
Alexandra Bengals

For Bjarn:
Bjarn Zangmeister

For Blinky:
Blinky Snowflake Snep
Shiro Snep

For Debra:
Debra Crowe-Vitale
Robin Thorne

For Erica:
Karen Cravotto
Arinder Kaur
Diana Russell
Marty Varon

For Justin Hunter:
Justin Hunter
JB JB
Ashleigh Lutz-Nelson
Ryan Nelson
Natalie Sachs
Marielle Westerman

For Julianne:
Thomas Hiura
Tony Le
Julianne Pyron

For David Hubbert:
David Hubbert

For Kaia:
Tari Gordon

For Varpu Kaplas:
Barbara Daniel
Lainei Gaines
Hollie Hester
Outi Kaplas
Varpu Kaplas
Reija-Tuulia Kokko
Otto Kopra
Louise Larsson
Emma Leuw

For Kari-anne:
Sille Espeland
Kari-anne Gulbrandsen

For Kayla:
Gianessa Araya
Sammi Araya

For Lee:
Laura Anne
Darlena Ciraulo
Tanya Palmer
Sara Rider
Peter & Sara Riger

For Lisa:
Amy Cole

For Ashleigh Lutz-Nelson:
Tori & Chris Baker
Kayley Bateman
Heather Brockley
Ivy Brower
Anna Chaney
Daniel Gutierrez
Nicholas & Caroline Han
Dr. Rodney Jackson
Marissa & Tim Johnson
Lori Komejan
Kim & Jim Lloyd
Randy Mazzuca
Katharine Morris

Kate Neal
Autumn Nelson
Ryan Nelson
Erin & Tim Oldread
Barbara Palmer
RJ Planck
Zachary Seidner &
Sibel Ciddi
Jenna Schmidt
Casey Lee Spencer
John Stanis
Patricia Stengle
Linda Tabor-Beck
Matthew & Tori Williams
Laura Wittish

For Adrian McColgin:
Janine Geenen
Rebecca McColgin

For Olivia:
Lucas Seimas-Hart

For Jessica Rice:
Michelle Keane
Jessica Rice

For Sally:
Fran Ecklind
Georgina Isola
Joyce Robinson

For Sam:
Joe Cooper
Duncan
Paul Harrison
Jimmi Hill
Chris Leigh
Julie Leigh
Sam Leigh

For John Stanis:
Jaclyn Ann
Kelly Daire
Whitney Martin-Steinfeld
Douglas Petties
Chloe Poulter
Joyce Robinson

For Ursula:
Ursula Kennedy
Marc Light

IN HONOR OF

Apex Athletic Wear:
Jared Bublinec

Eleanor Bookwalter:
Mary Bookwalter

Neave Collins:
Mary Nolan

Dr. Carmel F. Davis III:
Lisabeth Davis

Dane Ford-Roshon:
Michael Roshon

Lorraine Gagliardotto:
Andrea Zuckerman

Phyllis Gurney:
Joyce Robinson
Rhonda Stallings

Esther A. Heller:
Joanne Corsano

Tor Jennison:
Talley Nichols

Gus Kass:
Devon Breton-Pakozdi

Tshiring Lhamu Lama:
Julie Palais

Ashleigh Lutz Nelson:
Suzan Alexander

My Favorite Animal:
Thomas & Pamela Jozwiak

Perry Nelson:
Amy Tao

Brian Peniston:
William Peniston

Evelyn Rony:
Jessie Myszka

Snow Leopard Day:
Duncan Ward

Susan Sineath:
Valerie Haskins-Moore

Betty White:
Colleen Hagerty
Sarah Riemer
Naomi Steele

Bob Wilson:
Tom C Parrett

Aurora E. Wright:
Cristina Wright

Wildlife Conservation
Network:
Sandeep Dey

IN MEMORY OF

Lani Kae Abbott:
Meredith Shedd-Driskel

Karen Amling:
Elizabeth McKerrow

Corky Anderson:
Wayne Momerak

Ranadeep Bhadury:
Raja Bhadury

Castlefield Design/Gisela
Taylor:
Sophie Taylor

Priscilla “Peaches” Curtis,
Roko S.V. Bujas, & LeRoy E.
Curtis, Jr.:
Ann Bujas

John C. Garcia:
Carole Garcia

Grandma Jeannie:
Riley McGaw

Grizzly:
Duncan Ward

Phyllis Gurney:
Donna Albini
John Gurney
Berna-Denise Silver
Rhonda Stallings

Charley Hyde:
Charles Hyde

Rev. Meiko Jones:
Elizabeth Jonca

Georgia Langhorst:
Elizabeth Langhorst

Sally J Louie:
Donna Louie

Ruth McVeigh:
Carey Peterson

P22 The Mountain Lion:
Duncan Ward

Evan Poehlmann:
Anne Husmann Belcher

Ray Rodney:
Amy Rodney

Chia Lin Chen Soong:
Jane C Soong

Bruce “Wayne” Speedy:
Debbie Kershaw
Corie Biggs

Betty White:
Charity Coleman
Janine Irwin

ON BEHALF OF

Dominik:
Ines Hamann

For Miles Gilbert:
Anonymous (1)
Louis Medd
Jack Spoons

Alexey Grunkov:
VMware Foundation

Talulah Heppner:
Allison Bulow

Eva Ho:
Mya Ho

Kaia:
Kaia Tronsdal

Lori:
Jolyon Hughes

Project Survival:
Zoological Association of
America

Project Xero:
Mariana Hernandez

Baby Bhatt Sohni:
Rupika Jain

Stephanie:
Linda Belben

The Snow Leopard’s Future:
Masashi Yoshikawa

Wildwood Wildlife Park Zoo
& Safari:
Judy Domaszek

Zaraa:
Jess Garland
Tuleen Jane
Tia Lawson
Fildelma Martin
Monique Martin
Vita Mickane
Mindy Newquist
Mandy Mcardle Potter
Travis Potter
Kelly Slattery
Tamara Turner

ORGANIZATIONS
PROVIDING
FUNDRAISING
PLATFORMS

AmazonSmile
Benevity
CharityNavigator
Crowdrise
eBay Giving Works
escrip
Everydayhero
Facebook
Giving Assistant
GoodSearch/GoodShop
GuideStar
Idealist
JustGive/JustGiving
Network for Good
OneToday by Google
ProjectWorldImpact
WorldCentric
YourCause



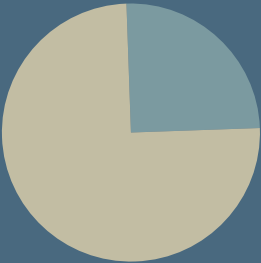
OUR APPROACH

Snow Leopard Conservancy partners with local leaders, range country organizations, and the mountain communities living with snow leopards. We invest in solutions that save the lives of snow leopards and other predators from the consequence of human-wildlife conflict, building a long-term foundation of coexistence and guardianship. Our community-based conservation initiatives are highly participatory, empowering Indigenous traditional ecological knowledge and evidence-based science, and promote healthy mountain ecosystems across the snow leopards’ range.

FINANCIAL REPORT

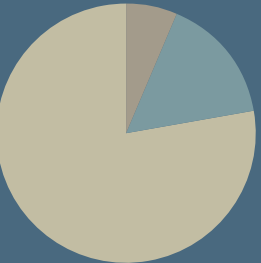
CALENDAR YEAR 2022

REVENUE



75.19%	Unrestricted donations	\$578,890.39
24.81%	Restricted donations	\$191,004.07
TOTAL REVENUE		\$769,894.46

EXPENSES



77.57%	Programs	\$510,040.59
15.89%	Management/General	\$104,463.62
6.54%	Fundraising	\$43,009.81
TOTAL EXPENSES		\$657,514.02

PROGRAMS
EXPENSES
BREAKDOWN



49.43%	Conservation	\$252,088.56
44.95%	Education Outreach	\$229,273.14
5.62%	Applied Research	\$28,678.89
TOTAL PROGRAMS EXPENSES		\$510,040.59



Complete financial reports are available upon request. Snow Leopard Conservancy is recognized by the Internal Revenue Service as a 501(c)3 nonprofit organization #61-1614981